

DESCRIPTION Serial Number:  
Stationary Phase: CA-WAX  
Film Thickness: 0.50  $\mu\text{m}$

15797

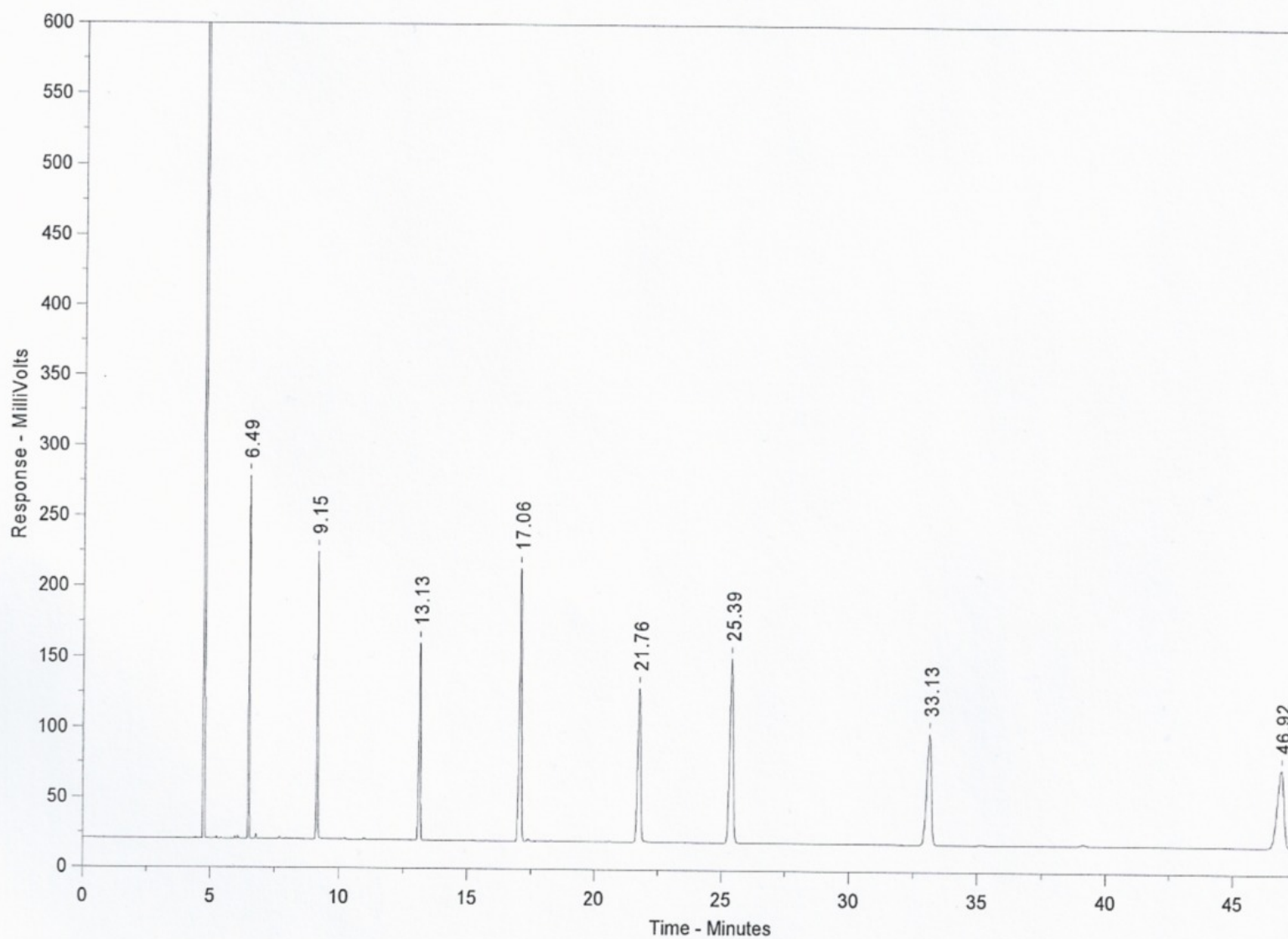
Part Number: 1409706  
Length: 60 m  
ID: 0.32 mm

### TEST CONDITIONS

Oven Temp: 165°C

Inj. Temp: 250°C  
Det. Temp: 275°C  
Detector Type: FID  
Split Ratio: 56:1  
Test Station: Instrument 2

Carrier Gas: Helium  
Flow Rate: 1.06 ml/min  
Linear Velocity: 22.0 cm/sec  
Pressure: 16.0 psi  
Sample Size: 0.6  $\mu\text{l}$



Retention Time (min)	Name	Conc. (mg/ml)	k'	Efficiency (plates/meter)
6.49	5-Nonanone	.6	.43	3726
9.15	1-Octanol	1.0	1.02	3238
13.13	Me. Undecanoate	1.0	1.89	3147
17.06	Naphthalene	1.0	2.76	2853
21.76	2,6-Dimethylaniline	.8	3.79	2739
25.39	2,6-Dimethylphenol	.8	4.59	2716
33.13	Me. Tetradecanoate	1.0	6.30	2621
46.92	Me. Pentadecanoate	1.0	9.34	2437