

DESCRIPTION Serial Number:  
Stationary Phase: CA-WAX  
Film Thickness: 0.25 µm

15789

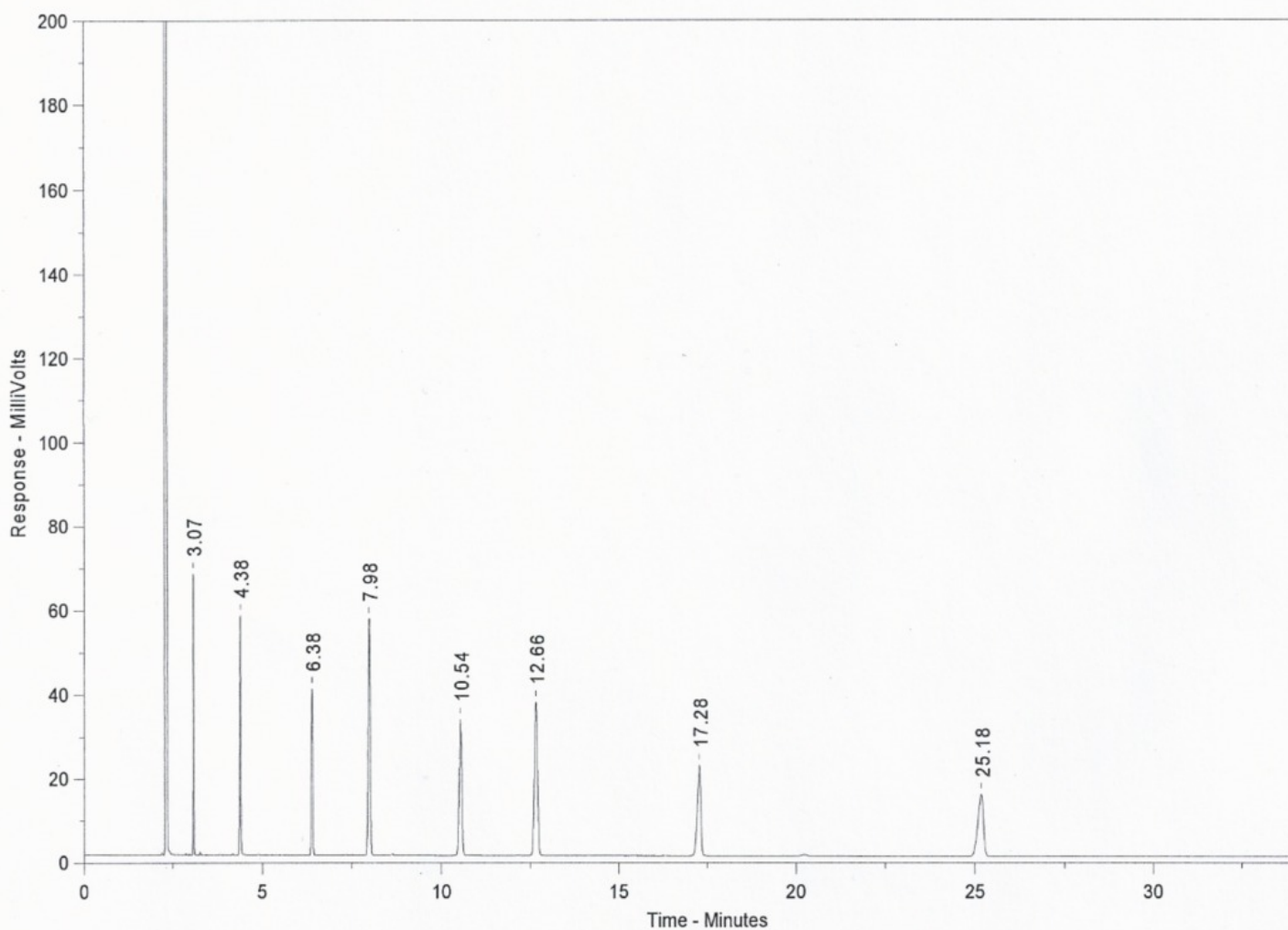
Part Number: 1406605  
Length: 30 m  
ID: 0.25 mm

TEST CONDITIONS

Oven Temp: 150°C

Inj. Temp: 250°C  
Det. Temp: 275°C  
Detector Type: FID  
Split Ratio: 90:1  
Test Station: GC 1

Carrier Gas: Helium  
Flow Rate: .67 ml/min  
Linear Velocity: 22.7 cm/sec  
Pressure: 12.0 psi  
Sample Size: 0.6 µl



Retention Time (min)	Name	Conc. (mg/ml)	k'	Efficiency (plates/meter)
3.07	5-Nonanone	.6	.40	3527
4.38	1-Octanol	1.0	.99	3542
6.38	Me. Undecanoate	1.0	1.90	4207
7.98	Naphthalene	1.0	2.63	3286
10.54	2,6-Dimethylaniline	.8	3.79	3338
12.66	2,6-Dimethylphenol	.8	4.75	3321
17.28	Me. Tetradecanoate	1.0	6.85	4224
25.18	Me. Pentadecanoate	1.0	10.45	3993