

DESCRIPTION Serial Number: 15801
Stationary Phase: CA-5
Film Thickness: 1.00 µm

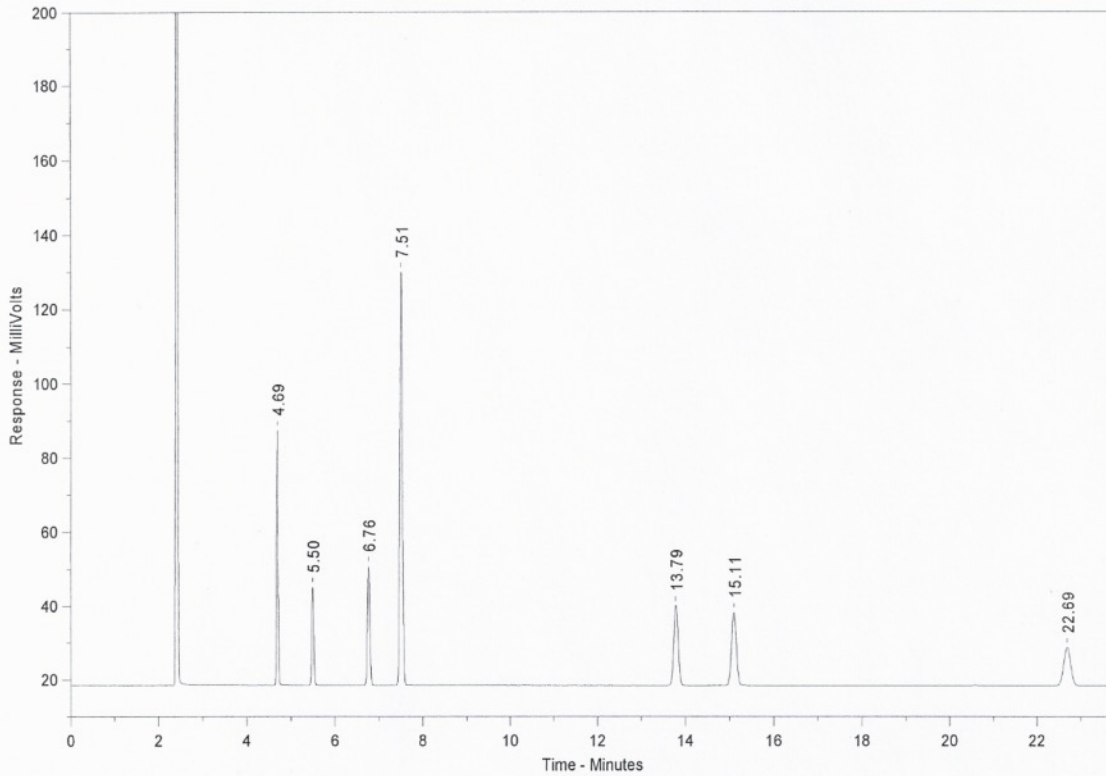
Part Number: 0206707
Length: 30 m
ID: 0.32 mm

TEST CONDITIONS

Oven Temp: 160°C

Inj. Temp: 250°C
Det. Temp: 275°C
Detector Type: FID
Split Ratio: 56:1
Test Station: Instrument 2

Carrier Gas: Helium
Flow Rate: 1.06 ml/min
Linear Velocity: 22.0 cm/sec
Pressure: 8.0 psi
Sample Size: 1.0 µl



| Retention Time (min) | Name | Conc. (mg/ml) | k' | Efficiency (plates/meter) |
|----------------------|---------------------|---------------|------|---------------------------|
| 4.69 | 1-Octanol | 1.0 | 1.07 | 2497 |
| 5.50 | 2,6-Dimethylphenol | .8 | 1.42 | 2322 |
| 6.76 | 2,6-Dimethylaniline | .8 | 1.98 | 2347 |
| 7.51 | Naphthalene | 1.0 | 2.31 | 2418 |
| 13.79 | n-Tetradecane | 1.0 | 5.07 | 3020 |
| 15.11 | Me. Undecanoate | 1.0 | 5.66 | 2995 |
| 22.69 | Me. Dodecanoate | 1.0 | 9.00 | 3068 |