

DESCRIPTION Serial Number: 15765  
Stationary Phase: CA-1  
Film Thickness: 5.00 µm

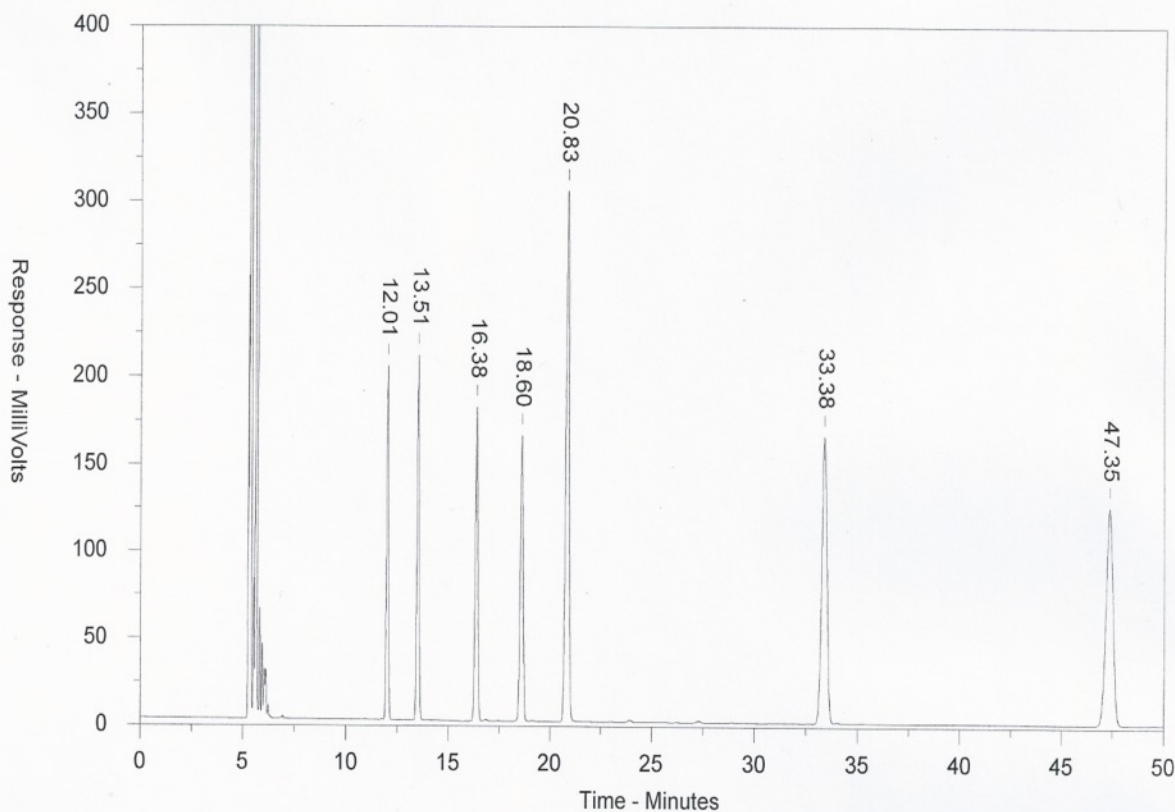
Part Number: 0109910  
Length: 60 m  
ID: 0.53 mm

TEST CONDITIONS

Oven Temp: 185°C

Inj. Temp: 250°C  
Det. Temp: 275°C  
Detector Type: FID  
Split Ratio: 21:1  
Test Station: Shimadzu

Carrier Gas: Helium  
Flow Rate: 2.91 ml/min  
Linear Velocity: 22.0 cm/sec  
Pressure: 8.0 psi  
Sample Size: 1.0 µl



Retention Time (min)	Name	Conc. (mg/ml)	k'	Efficiency (plates/meter)
12.01	5-Nonanone	.6	1.65	1232
13.51	2,6-Dimethylphenol	.8	1.98	1261
16.38	2,6-Dimethylaniline	.8	2.61	1306
18.60	Naphthalene	1.0	3.10	1331
20.83	1-Decanol	1.0	3.59	1324
33.38	n-Tetradecane	1.0	6.35	1342
47.35	n-Pentadecane	1.0	9.43	1502