

DESCRIPTION Serial Number: 15641
Stationary Phase: CA-1
Film Thickness: 0.25 µm

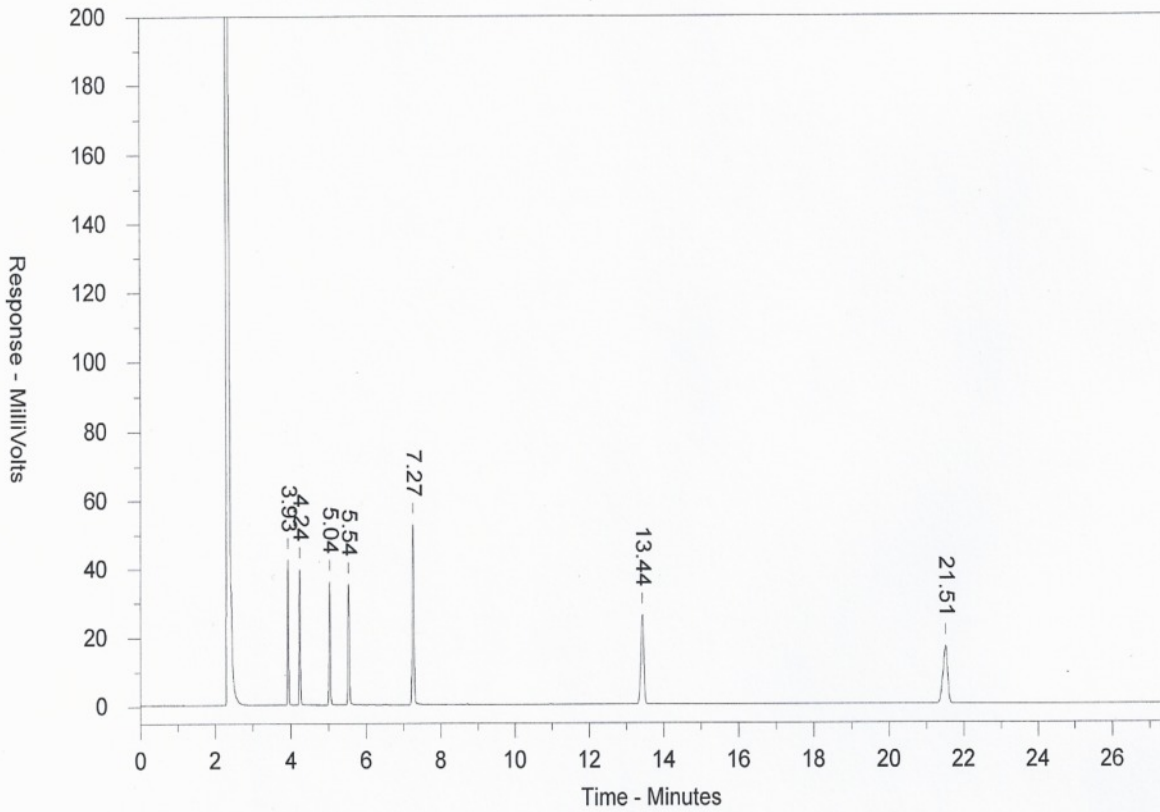
Part Number: 0106605
Length: 30 m
ID: 0.25 mm

TEST CONDITIONS

Oven Temp: 125°C

Inj. Temp: 250°C
Det. Temp: 275°C
Detector Type: FID
Split Ratio: 93:1
Test Station: GC 1

Carrier Gas: Helium
Flow Rate: .65 ml/min
Linear Velocity: 22.0 cm/sec
Pressure: 12.0 psi
Sample Size: 0.4 µl



Retention Time (min)	Name	Conc. (mg/ml)	k'	Efficiency (plates/meter)
3.93	5-Nonanone	.6	.73	4033
4.24	2,6-Dimethylphenol	.8	.87	3396
5.04	2,6-Dimethylaniline	.8	1.22	3485
5.54	Naphthalene	1.0	1.44	3528
7.27	1-Decanol	1.0	2.20	4268
13.44	n-Tetradecane	1.0	4.92	4475
21.51	n-Pentadecane	1.0	8.48	4624